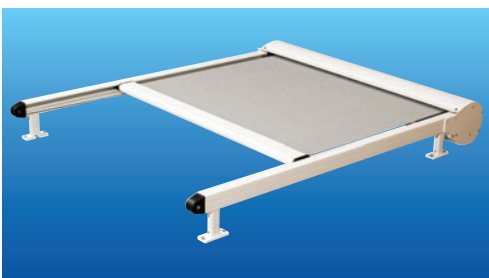


NEW Tess 420



We are delighted to launch this new version of the TESS 420 for external solar shading. The side guides have been remodelled for reduced light gap to the edge of the fabric. A new design of hem-bar end cap which is fully captive within the side guides makes for a stronger, more wind resistant system. As with the wire guided TESS 140 and TESS 440, the overall look and design of the system is neater and cleaner, whilst being solid and strong - characteristically Guthrie Douglas



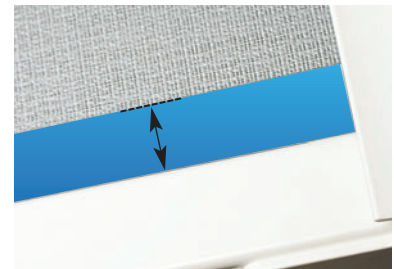
- Extruded Aluminium Hem-Bar with Injection Moulded End Caps



- UV Stabilised, Injection Moulded Return Pulleys



- Reduced Light Gap to edge of fabric



- Remodelled Side Guides

